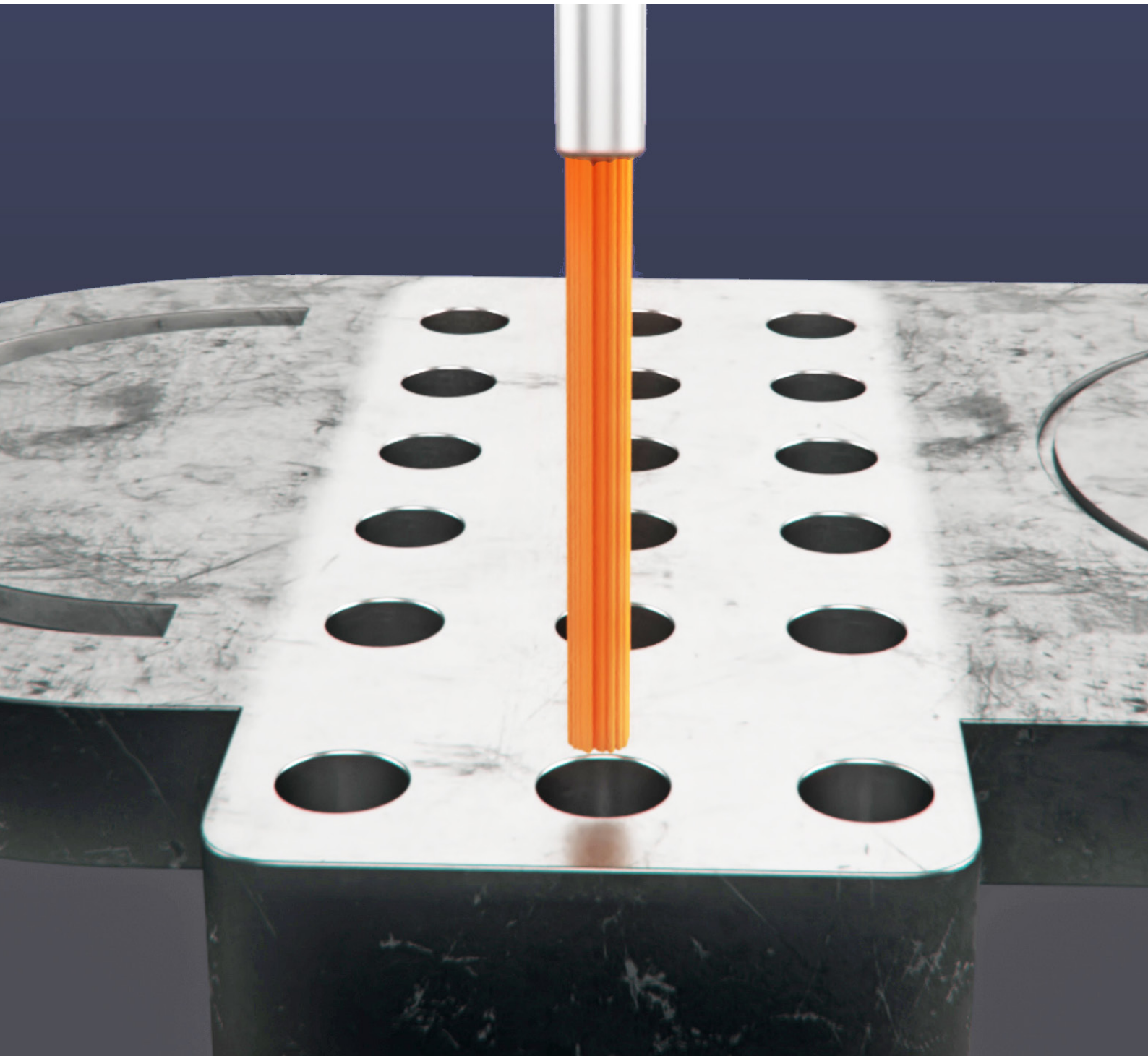




NOGA **MT**
MACHINE TOOLS



UFIBER

THE NEW NOGA MT **UFIBER** BRUSHES

UFIBER

INTRODUCING THE NEW NOGA MT UFIBER BRUSHES



**ADVANCED CERAMIC BRUSHES FOR PRECISION
AND DURABILITY IN SURFACE TREATMENT**

UFIBER

THE NEW NOGA MT UFIBER BRUSH

In today's fast-paced manufacturing environment, achieving superior surface finishes while maximizing efficiency is more critical than ever. NOGA MT is excited to introduce the new **UFIBER** Brush, a line of advanced ceramic fiber brushes designed to meet the highest standards of precision and durability in surface treatment applications.

UFIBER BRUSH HIGHLIGHTS

NANO-TECHNOLOGY PRECISION

UFIBER brushes utilize cutting-edge nano-technology to provide superior surface roughness control, exceptional wear resistance, and extended tool life. This innovation leads to fewer tool changes, longer operation times, and lower production costs.

3-IN-1 FUNCTIONALITY

Combining deburring, polishing, and finishing in a single tool, **UFIBER** brushes streamline the manufacturing process, reducing the need for multiple tools and operations.

VERSATILE APPLICATIONS

Suitable for a wide range of tasks, including surface polishing, inner diameter polishing, and small point polishing, **UFIBER** brushes perform consistently even on complex geometries and hard-to-reach areas.

AUTOMATION READY

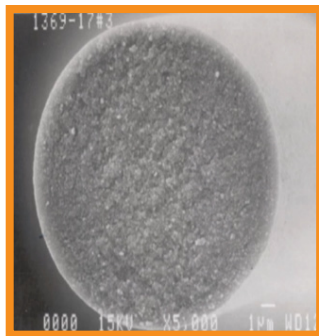
UFIBER brushes are compatible with CNC machines and robot arms, making them ideal for integration into automated manufacturing processes.



UFIBER FEATURES

NANO TECHNOLOGY FOR PRECISION POLISHING

UFIBER filament's structure leverages nano-technology to refine the grain structure of each ceramic fiber, transitioning from traditional micron-sized grains to state-of-the-art nano-sized grains. This innovation allows each fiber to maintain its edge throughout the polishing process, ensuring a consistently smooth and precise finish while offering superior wear resistance and durability.



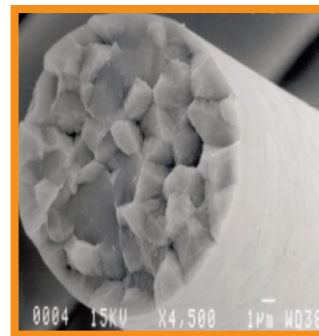
**UNMATCHED
PRECISION**

**CUTTING-EDGE
TECHNOLOGY**

**SUPERIOR
PERFORMANCE**

NOGA NANO TECHNOLOGY

versus



**LIMITED
PRECISION**

**OUTDATED
TECHNOLOGY**

**LOWER
DURABILITY**

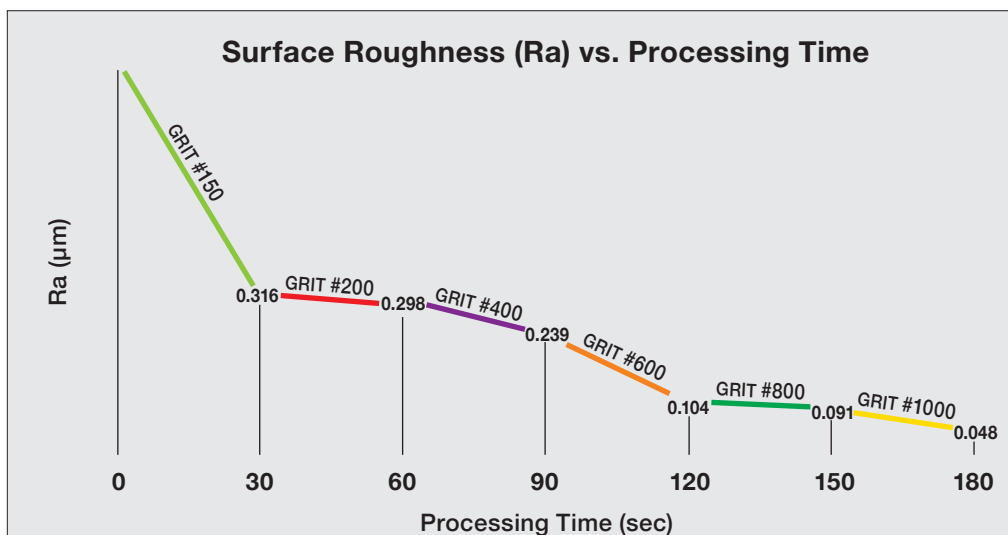
COMPETITORS

UNMATCHED SURFACE QUALITY

UFIBER bristles move beyond conventional grain structures, reducing them to nano size. This transformation results in significantly finer and more uniform surface finishes, even on the most demanding tasks. The bristle's ability to produce the finest polishing surfaces with exceptional efficiency makes them ideal for applications where surface quality is critical.

The graph illustrates the relationship between surface roughness (Ra) and processing time using different grit sizes of a **UFIBER** end brush.

As demonstrated in the graph, **UFIBER** brushes consistently reduce surface roughness with extended processing times, even on tough materials like S50C. Whether you're working with coarse or fine grit sizes, **UFIBER** brushes deliver smoother finishes faster, making them the perfect choice for industries where surface quality is paramount.



- Material: SAE 1050 / S50C / Wr. 1.1206
- Rotational speed: 3200 rpm

UFIBER FEATURES

WIDE GRIT RANGE

Wide Grit Range **UFIBER** bristles are available in grits ranging from #150 to #6000, providing flexibility to handle various work materials and burr conditions.

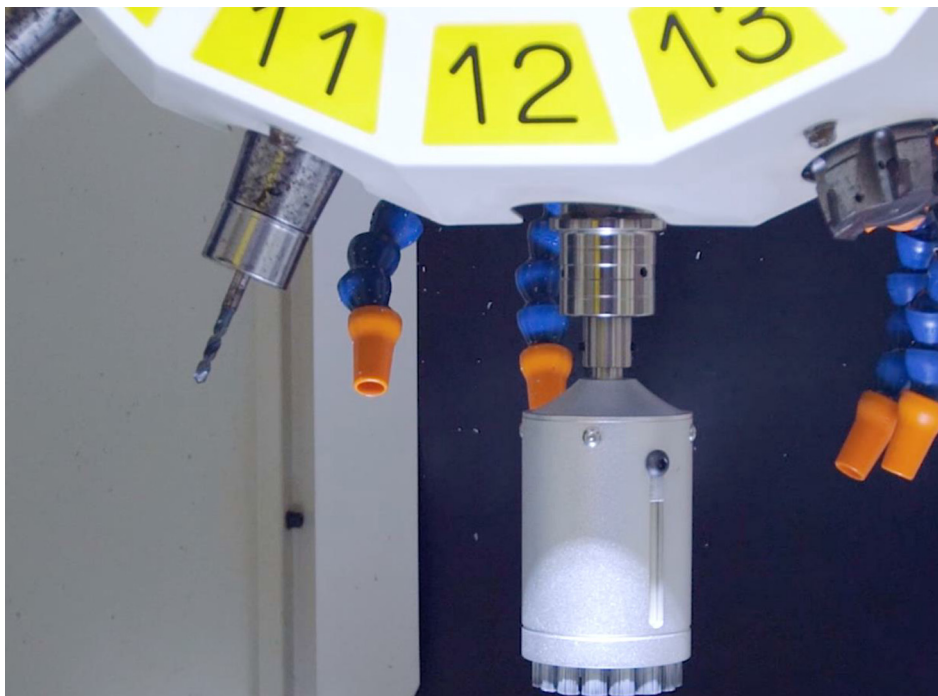


◀ **HARD**

SOFT ▶

EFFICIENT AUTOMATION

Efficient Automation with the right selection of brush type and grit, **UFIBER** brushes facilitate the automation of deburring, removal of toolmarks and the polishing processes with the same machine code or robotic arms, making them an excellent choice for advanced manufacturing environments.



UFIBER PRODUCT RANGE

THE NEW NOGA MT **UFIBER** BRUSH APPLICATIONS

SURFACE BRUSH



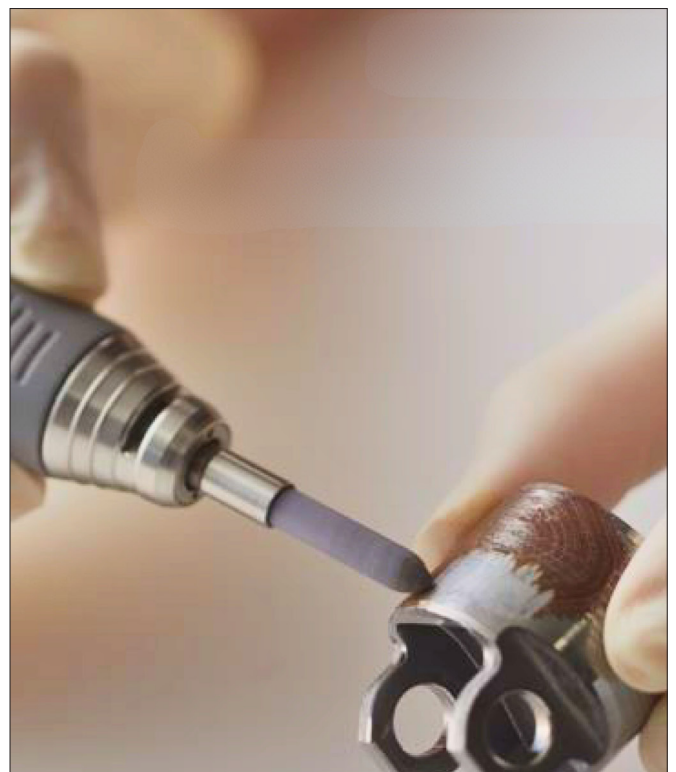
CROSS-HOLE BRUSH



POINT BRUSH

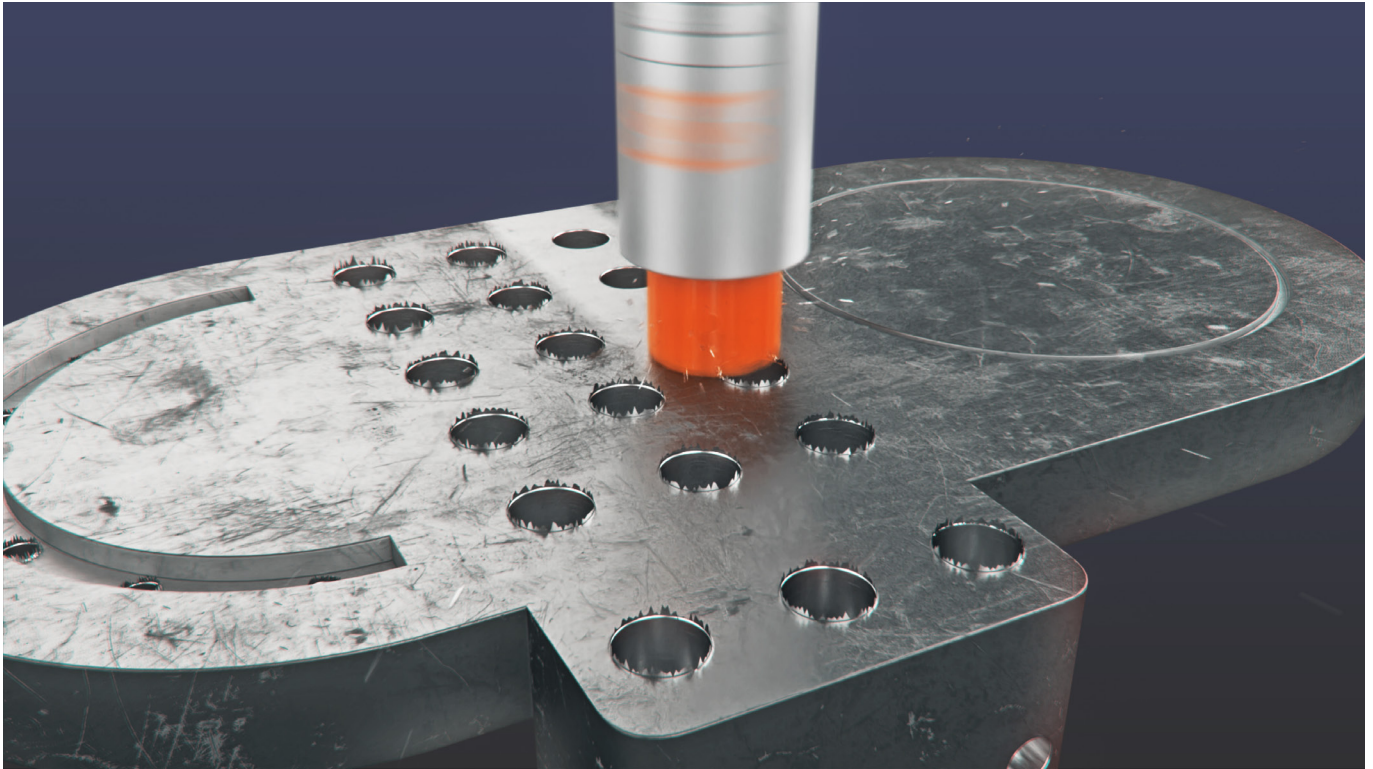


END BRUSH



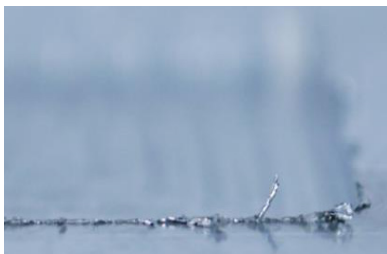
UFIBER

SURFACE TYPE BRUSHES



Designed for surface polishing and deburring, ideal for achieving uniform finishes on flat surfaces. Tip-cutting brushes are designed to fit into a sleeve with the tool shank, making them ideal for automated deburring in CNC machines, robots, and other equipment.

- Available Range: **6 - 100 mm / 0.236 - 3.937"**



BEFORE

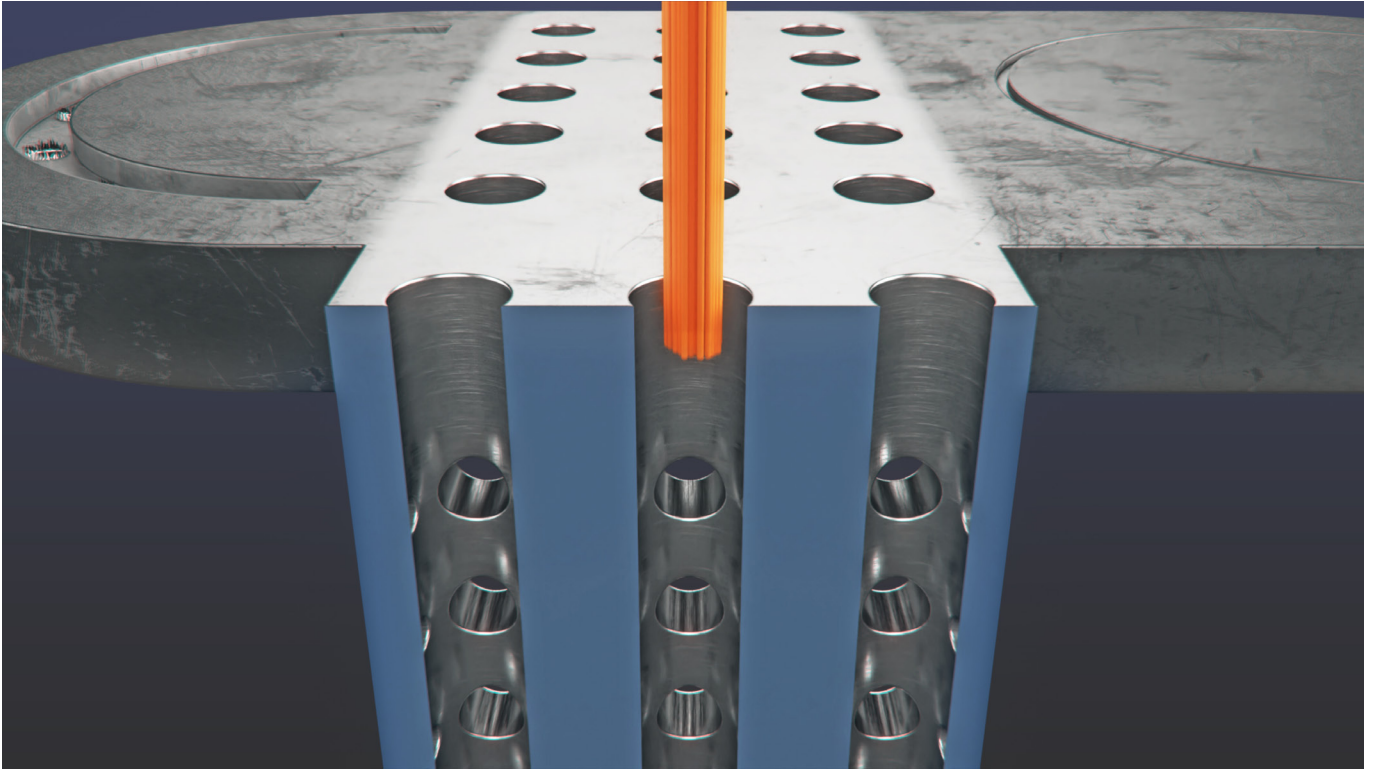


AFTER



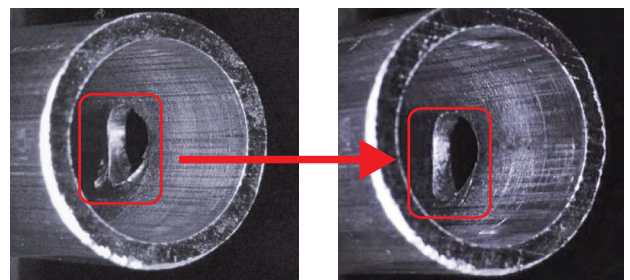
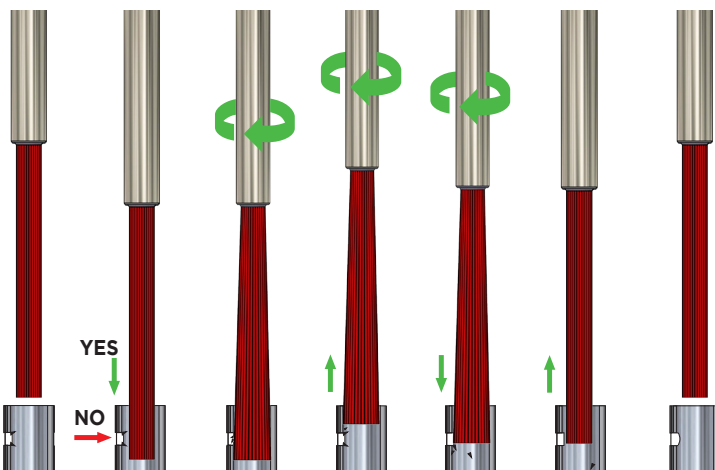
UFIBER

CROSS-HOLE TYPE BRUSHES



Designed for inner diameter polishing and cross-hole burr removal. The brush expands due to centrifugal forces, allowing it to conform precisely to the pilot hole diameter, making it versatile for various applications.

- Available Range: **6 - 100 mm / 0.236 - 3.937"**

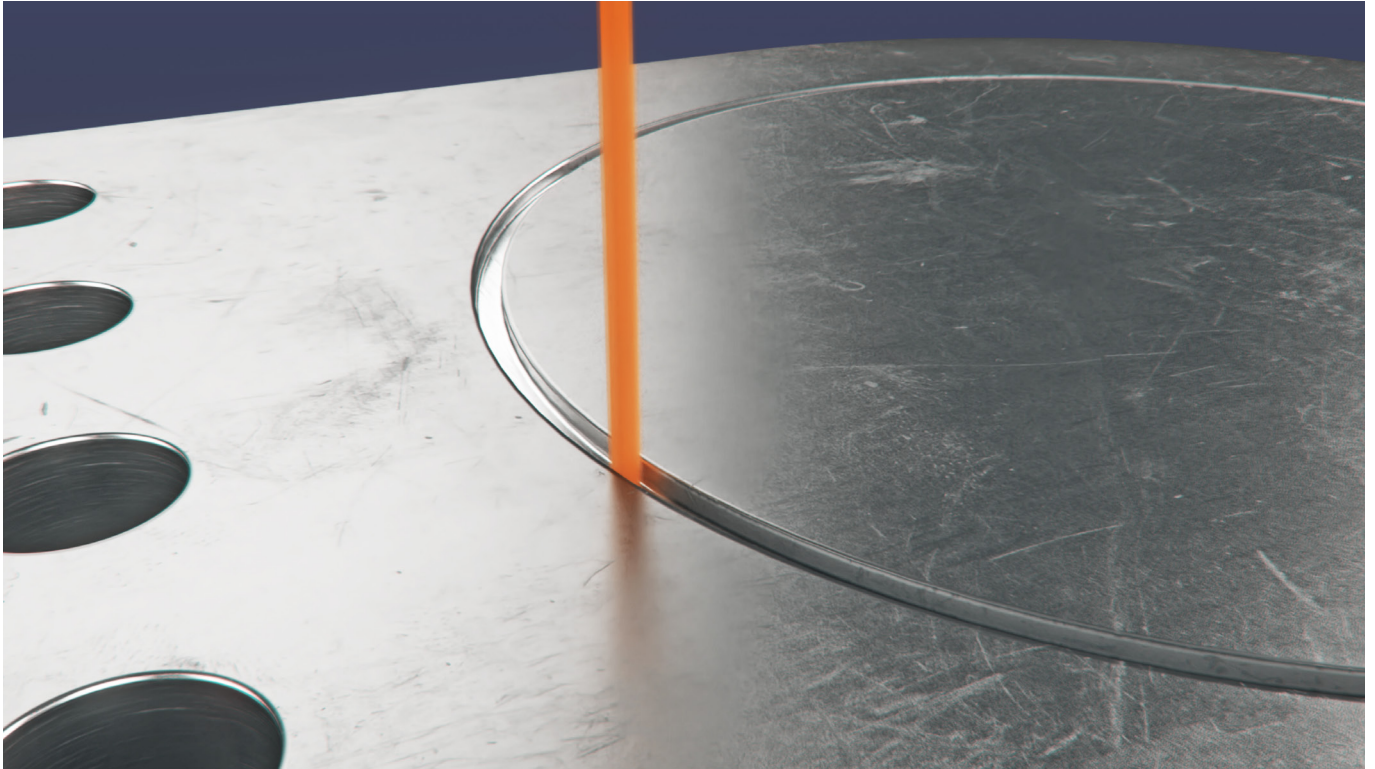


BEFORE

AFTER

UFIBER

POINT TYPE BRUSHES



Designed for surface polishing and deburring, ideal for achieving uniform finishes on flat surfaces. Tip-cutting brushes are designed to fit into a sleeve with the tool shank, making them ideal for automated deburring in CNC machines, robots, and other equipment.



UFIBER

END TYPE BRUSHES

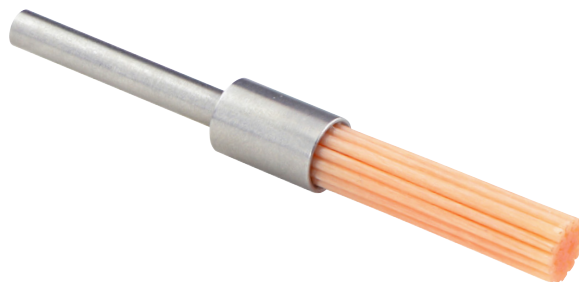


Designed for use with hand-held rotary tools and CNC machines, making it ideal for precise finishing tasks, especially in tight or recessed areas where traditional brushes may fall short. This brush features high bending strength and can operate at max. 12000 RPM without the risk of filament breakage.

- Available with: **Ø 5mm / 0.197"**

* The brush tip can be angled using a diamond disk on a lathe or spindle.

** Not recommended with pneumatic powered tools.

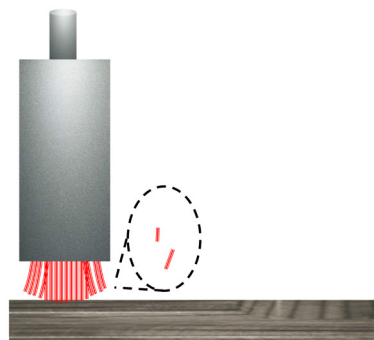


UFIBER

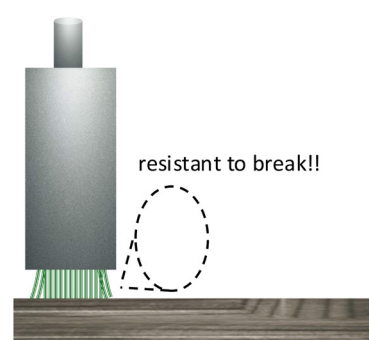
BENEFITS OF NOGA MT UFIBER BRUSHES

- 3-in-1 Functionality:** **UFIBER** brushes combine deburring, polishing, and finishing in a single tool. This multifunctional capability reduces the need for multiple tools and operations, streamlining the manufacturing process and saving time and costs.
- Superior Surface Finish:** The nano-bonded **UFIBER** bristles reduce polishing scratches, achieving a finer surface finish compared to conventional nylon brushes or ceramic bristles that use micro-bond technology.
- Extended Tool Life:** **UFIBER** ceramic fiber bristles offer better control over spreading compared to conventional brushes, while maintaining strong polishing power even at high speeds. This leads to a longer lifespan for the brushes, reducing the need for frequent replacements.
- Stable Grinding Power:** **UFIBER** brushes provide consistent grinding power, supporting the automation of deburring and tool mark removal without the need to frequently change the brush shape.

Conventional brushes

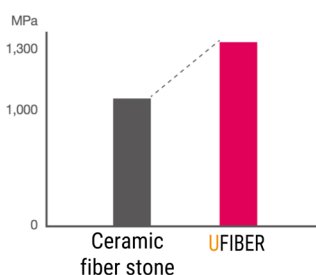


UFIBER

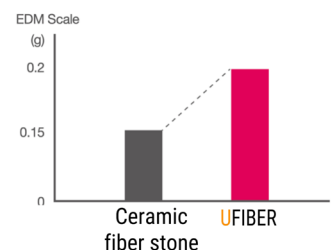


- Time Efficiency:** **UFIBER** brushes have 60 times more grinding power, reducing the process time by 20% compared to abrasive nylon brushes. This efficiency translates into faster production cycles and lower overall costs.
- Versatility:** **UFIBER** brushes excel in a wide range of applications and materials, with 10 different bristle grits available, making them suitable for diverse industries and tasks.
- Centrifugal Adaptability:** Cross-hole brushes expand under centrifugal forces, perfectly fitting pilot hole diameters for enhanced versatility, making them ideal for various detailed and intricate tasks.
- High Bending Strength:** The brushes retain their shape and performance even under high RPM conditions, ensuring reliable operation and consistent results.

Bending strength
130%
 Save Costs



Grinding performance
200%
 Save time



UFIBER APPLICATIONS

The **UFIBER** brushes are suitable for any type of material in the market, including composite materials (FRP), copper, aluminium, SUS, carbon steels, stainless steel, and hardened materials. This versatility makes **UFIBER** brushes ideal for a wide range of industrial applications, ensuring high performance across various materials.

AUTOMOTIVE INDUSTRY

Ideal for deburring and finishing engine components, transmission parts, and other metal surfaces, **UFIBER** brushes ensure smooth finishes and high precision, critical in automotive manufacturing.

AEROSPACE

UFIBER brushes are suitable for precision surface treatment of aircraft components, ensuring compliance with stringent industry standards for safety and performance.

MEDICAL DEVICES

UFIBER brushes ensure smooth, polished finishes on surgical instruments and implants, which are critical for both functionality and safety in medical applications.

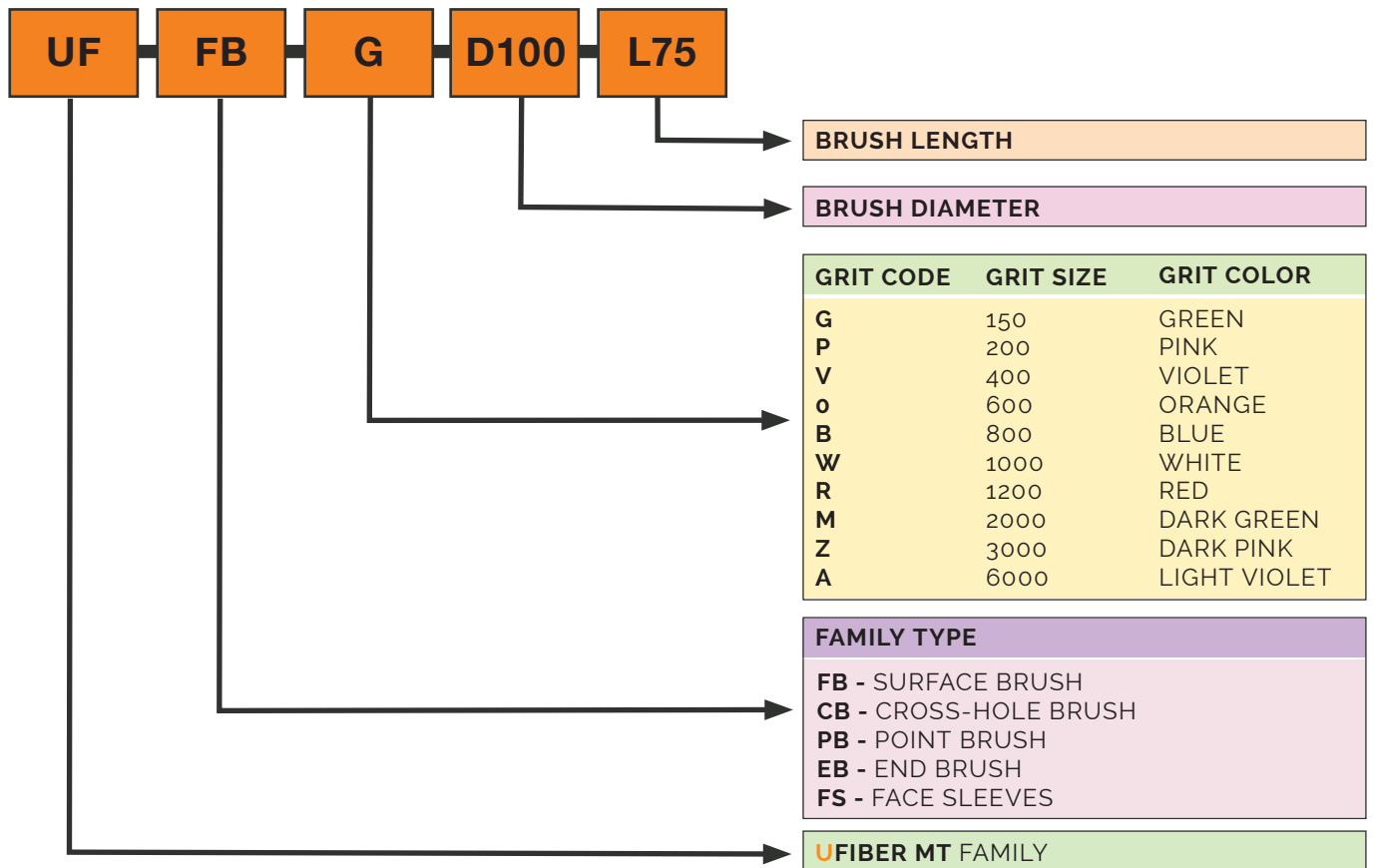
GENERAL MANUFACTURING

UFIBER brushes are versatile enough to be used in various manufacturing processes, including metalworking, plastics, and composites. They can handle different materials and are adaptable to a wide range of surface treatment needs.



UFIBER BRUSH CODING SYSTEM:

SPECIFICATIONS AND IDENTIFICATION



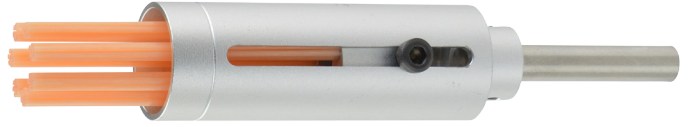
GRIT OPTIONS FOR MACHINING REQUIREMENTS

Selecting the right brush grit by machined materials or burr conditions:



UFIBER

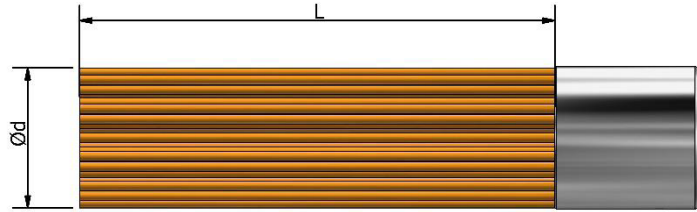
SURFACE BRUSH ITEM LIST



SKU	DESCRIPTION	GRIT SIZE	Ød mm / inch	L mm / inch	Depth Of Cut (DOC)			Feed mm / min. inch / min.	Brush Projection mm / inch
					Polishing mm / inch	Deburring mm / inch	Max. mm / inch		
UF1100	UF-FB-G-D100-L75	150	100 mm / 3.937"	75 mm / 2.952"	0.2 mm / 0.008"	0.5mm / 0.2"	1.2 mm / 0.5"	2000 mm / 79"	10 mm / 0.394"
UF1200	UF-FB-P-D100-L75	200							
UF1300	UF-FB-V-D100-L75	400							
UF1400	UF-FB-O-D100-L75	600							
UF1500	UF-FB-B-D100-L75	800							
UF1600	UF-FB-W-D100-L75	1000							
UF1700	UF-FB-R-D100-L75	1200							
UF1800	UF-FB-M-D100-L75	2000							
UF1900	UF-FB-Z-D100-L75	3000							
UF1000	UF-FB-A-D100-L75	6000							
UF1160	UF-FB-G-D060-L75	150	60 mm / 2.362"	75 mm / 2.952"	0.2 mm / 0.008"	0.5 mm / 0.2"	1.2 mm / 0.5"	2000 mm / 79"	10 mm / 0.394"
UF1260	UF-FB-P-D060-L75	200							
UF1360	UF-FB-V-D060-L75	400							
UF1460	UF-FB-O-D060-L75	600							
UF1560	UF-FB-B-D060-L75	800							
UF1660	UF-FB-W-D060-L75	1000							
UF1760	UF-FB-R-D060-L75	1200							
UF1860	UF-FB-M-D060-L75	2000							
UF1960	UF-FB-Z-D060-L75	3000							
UF1060	UF-FB-A-D060-L75	6000							
UF1140	UF-FB-G-D040-L75	150	40 mm / 1.575"	75 mm / 2.952"	0.2 mm / 0.008"	0.5 mm / 0.2"	1.2 mm / 0.5"	2000 mm / 79"	10 mm / 0.394"
UF1240	UF-FB-P-D040-L75	200							
UF1340	UF-FB-V-D040-L75	400							
UF1440	UF-FB-O-D040-L75	600							
UF1540	UF-FB-B-D040-L75	800							
UF1640	UF-FB-W-D040-L75	1000							
UF1740	UF-FB-R-D040-L75	1200							
UF1840	UF-FB-M-D040-L75	2000							
UF1940	UF-FB-Z-D040-L75	3000							
UF1040	UF-FB-A-D040-L75	6000							
UF1125	UF-FB-G-D025-L75	150	25 mm / 0.984"	75 mm / 2.952"	0.2 mm / 0.008"	0.5 mm / 0.2"	1.2 mm / 0.5"	2000 mm / 79"	10 mm / 0.394"
UF1225	UF-FB-P-D025-L75	200							
UF1325	UF-FB-V-D025-L75	400							
UF1425	UF-FB-O-D025-L75	600							
UF1525	UF-FB-B-D025-L75	800							
UF1625	UF-FB-W-D025-L75	1000							
UF1725	UF-FB-R-D025-L75	1200							
UF1825	UF-FB-M-D025-L75	2000							
UF1925	UF-FB-Z-D1025-L75	3000							
UF1025	UF-FB-A-D025-L75	6000							

UFIBER

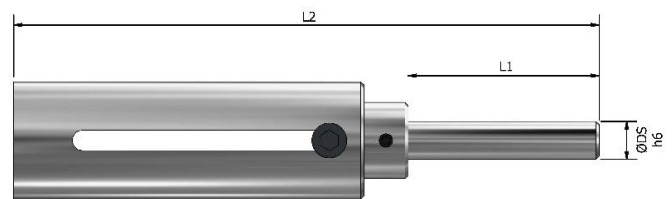
SURFACE BRUSH ITEM LIST



SKU	DESCRIPTION	GRIT SIZE	Ød mm / inch	L mm / inch	Depth Of Cut (DOC)			Feed mm / min. inch / min.	Brush Projection mm / inch
					Polishing mm / inch	Deburring mm / inch	Max. mm / inch		
UF1160	UF-FB-G-D015-L75	150	15 mm / 0.590"	50 mm / 1.969"	0.2 mm / 0.008"	0.5 mm / 0.2"	1.2 mm / 0.5"	2000 mm / 79"	10 mm / 0.394"
UF1260	UF-FB-P-D015-L75	200							
UF1360	UF-FB-V-D015-L75	400							
UF1460	UF-FB-O-D015-L75	600							
UF1560	UF-FB-B-D015-L75	800							
UF1660	UF-FB-W-D015-L75	1000							
UF1760	UF-FB-R-D015-L75	1200							
UF1860	UF-FB-M-D015-L75	2000							
UF1960	UF-FB-Z-D015-L75	3000							
UF1060	UF-FB-A-D015-L75	6000							
UF1140	UF-FB-G-D025-L75	150	6 mm / 0.26"	50 mm / 1.969"	0.2 mm / 0.008"	0.5 mm / 0.2"	1.2 mm / 0.5"	2000 mm / 79"	10 mm / 0.394"
UF1240	UF-FB-P-D025-L75	200							
UF1340	UF-FB-V-D025-L75	400							
UF1440	UF-FB-O-D025-L75	600							
UF1540	UF-FB-B-D025-L75	800							
UF1640	UF-FB-W-D025-L75	1000							
UF1740	UF-FB-R-D025-L75	1200							
UF1840	UF-FB-M-D025-L75	2000							
UF1940	UF-FB-Z-D025-L75	3000							
UF1040	UF-FB-A-D025-L75	6000							

SURFACE BRUSH SLEEVE ITEM LIST

SKU	Description	Suitable for	Ød mm / inch	L1 mm / inch	L2 mm / inch
UF5500	UF-FS-100-C16-L155	Ø100 / 3.937	Ø16 / 0.630	40 / 1.575	155 / 6.102
UF5560	UF-FS-060-C12-L150	Ø 60 / 2.362	Ø12 / 0.472	40 / 1.575	145 / 5.708
UF5540	UF-FS-040-C12-L140	Ø 40 / 1.575	Ø12 / 0.472	30 / 1.181	140 / 5.512
UF5525	UF-FS-025-C10-L140	Ø 25 / 0.984	Ø10 / 0.394	30 / 1.181	140 / 5.512
UF5515	UF-FS-015-C06-L90	Ø 16 / 0.590	Ø 6 / 0.236	30 / 1.181	90 / 3.543
UF5506	UF-FS-006-C06-L70	Ø 6 / 0.236	Ø 6 / 0.236	30 / 1.181	70 / 2.756



SURFACE BRUSH CUTTING RECOMMENDATIONS

DESCRIPTION	Ød mm	Ød inch	Spindle Speed min. max. min ⁻¹		Depth Of Cut (DOC)			Feed mm / min. inch / min.	Brush Projection mm / inch
			min.	max.	Polishing mm / inch	Deburring mm / inch	Max. mm / inch		
UF-FB-....-D006-L30	6	0.236	9000	12000	0.2 mm / 0.008"	0.5 mm / 0.2"	1.2 mm / 0.5"	2000 mm / 79"	10 mm / 0.394"
UF-FB-....-D015-L50	15	0.591	5700	7200					
UF-FB-....-D025-L75	25	0.984	5000	6000					
UF-FB-....-D040-L75	40	1.575	2700	3600					
UF-FB-....-D060-L75	60	2.362	1800	2400					
UF-FB-....-D100-L75	100	3.937	1000	1400					

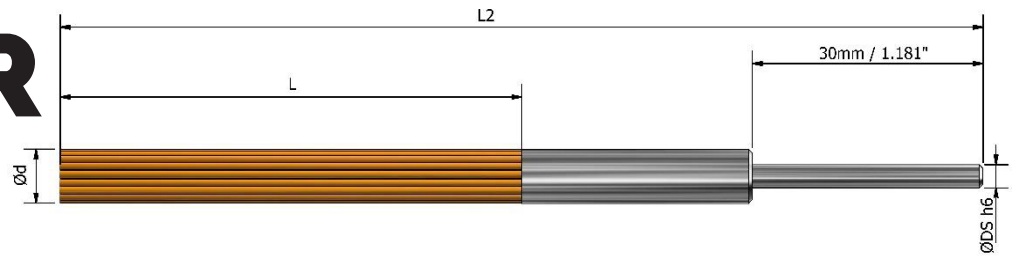
UFIBER

CROSS-HOLE BRUSH ITEM LIST



SKU	DESCRIPTION	GRIT SIZE	Ød mm/ inch	ØDS mm/ inch	L mm/ inch	L2 mm/ inch	Max. Spindle Speed mm / inch	Pilot Hole Dia.	
								Grit #150 - #1000 mm / inch	Grit #200 - #6000 mm / inch
UF2170	UF-CH-G-D070-L60	150	7 mm / 0.2755"	6 mm / 0.2362"	60 mm / 2.36"	130 mm / 5.12"	1400	9 mm -14 mm / 0.354"- 0.551"	-
UF2270	UF-CH-P-D070-L60	200							
UF2370	UF-CH-V-D070-L60	400							
UF2470	UF-CH-O-D070-L60	600							
UF2570	UF-CH-B-D070-L60	800							
UF2670	UF-CH-W-D070-L60	1000			50 mm / 1.97"	120 mm / 4.72"	1400	-	9 mm -14 mm / 0.354"- 0.551"
UF2770	UF-CH-R-D070-L50	1200							
UF2870	UF-CH-M-D070-L50	2000							
UF2970	UF-CH-Z-D070-L50	3000							
UF2070	UF-CH-A-D070-L50	6000							
UF2150	UF-CH-G-D050-L60	150	5 mm / 0.1968"	6 mm / 0.2362"	60 mm / 2.36"	130 mm / 5.12"	1400	7 mm -9 mm / 0.276"- 0.354"	-
UF2250	UF-CH-P-D050-L60	200							
UF2350	UF-CH-V-D050-L60	400							
UF2450	UF-CH-O-D050-L60	600							
UF2550	UF-CH-B-D050-L60	800							
UF2650	UF-CH-W-D050-L60	1000			50 mm / 1.97"	120 mm / 4.72"	1400	-	8 mm -10 mm / 0.315"- 0.394"
UF2750	UF-CH-R-D050-L50	1200							
UF2850	UF-CH-M-D050-L50	2000							
UF2950	UF-CH-Z-D050-L50	3000							
UF2050	UF-CH-A-D050-L50	6000							
UF2130	UF-CH-G-D030-L60	150	3 mm / 0.1181"	3 mm / 0.1181"	60 mm / 2.36"	130 mm / 5.12"	1400	5 mm -7 mm / 0.197"- 0.276"	-
UF2230	UF-CH-P-D030-L60	200							
UF2330	UF-CH-V-D030-L60	400							
UF2430	UF-CH-O-D030-L60	600							
UF2530	UF-CH-B-D030-L60	800							
UF2630	UF-CH-W-D030-L60	1000			50 mm / 1.97"	120 mm / 4.72"	1400	-	5 mm -7 mm / 0.197"- 0.276"
UF2730	UF-CH-R-D030-L50	1200							
UF2830	UF-CH-M-D030-L50	2000							
UF2930	UF-CH-Z-D030-L50	3000							
UF2030	UF-CH-A-D030-L50	6000							
UF2115	UF-CH-G-D015-L50	150	1.5 mm / 0.0590"		50 mm / 1.97"	120 mm / 4.72"	2000	3.5 mm -5 mm / 0.138"- 0.197"	3.5 mm -5 mm / 0.138"- 0.197"
UF2215	UF-CH-P-D015-L50	200							
UF2315	UF-CH-V-D015-L50	400							
UF2415	UF-CH-O-D015-L50	600							
UF2515	UF-CH-B-D015-L50	800							
UF2615	UF-CH-W-D015-L50	1000							
UF2715	UF-CH-R-D015-L50	1200							
UF2815	UF-CH-M-D015-L50	2000							
UF2915	UF-CH-Z-D015-L50	3000							
UF2015	UF-CH-A-D015-L50	6000							

UFIBER



CROSS-HOLE BRUSH CUTTING RECOMMENDATIONS

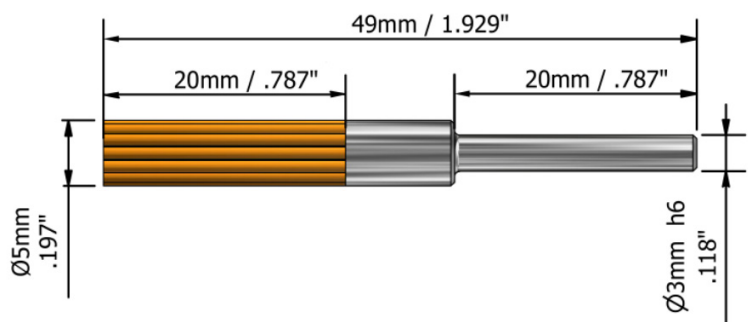
DESCRIPTION	$\varnothing d$ mm / inch	L1 Bristle Length mm / inch	L2 Total Length mm / inch	Spindle Speed		Pilot Hole Dia.	
				min.	max.	Grit #150 - #1000 mm / inch	Grit #200 - #6000 mm / inch
UF-CH-....-D015-L60	1.5 mm / 0.059"	50 mm / 1.97"	120 mm / 4.72"	-	2000	3.5 - 5 / 0.138 - 0.197	3.5 - 5 / 0.138 - 0.197
UF-CH-....-D030-L60	3.0 mm / 0.118"	60 mm / 2.36"	120 mm / 4.72"	-	1400	5 - 7 / 0.197 - 0.276	-
UF-CH-....-D030-L50	3.0 mm / 0.118"	50 mm / 1.97"	130 mm / 5.12"	-	1400	-	5 - 7 / 0.197 - 0.276
UF-CH-....-D050-L60	5.0 mm / 0.197"	60 mm / 2.36"	130 mm / 5.12"	-	1400	7 - 9 / 0.276 - 0.354	-
UF-CH-....-D050-L50	5.0 mm / 0.197"	50 mm / 1.97"	120 mm / 4.72"	-	1400	-	8 - 10 / 0.315 - 0.394
UF-CH-....-D070-L60	7.0 mm / 0.276"	60 mm / 2.36"	130 mm / 5.12"	-	1400	7 - 9 / 0.276 - 0.354	-
UF-CH-....-D070-L50	7.0 mm / 0.276"	50 mm / 1.97"	120 mm / 4.72"	-	1400	-	10 - 20 / 0.394 - 0.787

UFIBER

END BRUSH ITEM LIST



SKU	DESCRIPTION	GRIT SIZE	Maximum Spindle Speed min ⁻¹
UF4150	UF-EB-G-D5-L20	150	12000
UF4250	UF-EB-P-D5-L20	200	
UF4350	UF-EB-V-D5-L20	400	
UF4450	UF-EB-O-D5-L20	600	
UF4550	UF-EB-B-D5-L20	800	
UF4650	UF-EB-W-D5-L20	1000	
UF4750	UF-EB-R-D5-L20	1200	
UF4850	UF-EB-M-D5-L20	2000	
UF4950	UF-EB-Z-D5-L20	3000	
UF4050	UF-EB-A-D5-L20	6000	



END BRUSH CUTTING RECOMMENDATIONS

DESCRIPTION	$\varnothing d$		Max. Spindle Speed min ⁻¹
	mm	inch	
UF-EB-....-D1-L20	5 mm	0.197"	12000

UFIBER

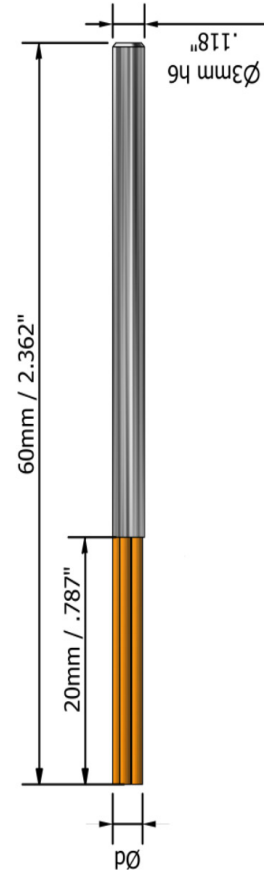
POINT BRUSH ITEM LIST



SKU	Description	Grit Size	Ød mm / inch	Maximum Spindle Speed min ⁻¹
UF3130	UF-PB-G-D3-L20	150	3.0 / 0.1181	12000
UF3230	UF-PB-P-D3-L20	200		
UF3330	UF-PB-V-D3-L20	400		
UF3430	UF-PB-O-D3-L20	600		
UF3530	UF-PB-B-D3-L20	800		
UF3630	UF-PB-W-D3-L20	1000		
UF3730	UF-PB-R-D3-L20	1200		
UF3830	UF-PB-M-D3-L20	2000		
UF3930	UF-PB-Z-D3-L20	3000		
UF3030	UF-FB-A-D3-L20	6000		
UF3125	UF-PB-G-D2.5-L20	150	2.5 / 0.0984	12000
UF3225	UF-PB-P-D2.5-L20	200		
UF3325	UF-PB-V-D2.5-L20	400		
UF3425	UF-PB-O-D2.5-L20	600		
UF3525	UF-PB-B-D2.5-L20	800		
UF3625	UF-PB-W-D2.5-L20	1000		
UF3725	UF-PB-R-D2.5-L20	1200		
UF3825	UF-PB-M-D2.5-L20	2000		
UF3925	UF-PB-Z-D2.5-L20	3000		
UF3025	UF-PB-A-D2.5-L20	6000		
UF3120	UF-PB-G-D2-L20	150	2.0 / 0.0787	12000
UF3220	UF-PB-P-D2-L20	200		
UF3320	UF-PB-V-D2-L20	400		
UF3420	UF-PB-O-D2-L20	600		
UF3520	UF-PB-B-D2-L20	800		
UF3620	UF-PB-W-D2-L20	1000		
UF3720	UF-PB-R-D2-L20	1200		
UF3820	UF-PB-M-D2-L20	2000		
UF3920	UF-PB-Z-D2-L20	3000		
UF3020	UF-PB-A-D2-L20	6000		
UF3115	UF-PB-G-D1.5-L20	150	1.5 / 0.0590	12000
UF3215	UF-PB-P-D1.5-L20	200		
UF3315	UF-PB-V-D1.5-L20	400		
UF3415	UF-PB-O-D1.5-L20	600		
UF3515	UF-PB-B-D1.5-L20	800		
UF3615	UF-PB-W-D1.5-L20	1000		
UF3715	UF-PB-R-D1.5-L20	1200		
UF3815	UF-PB-M-D1.5-L20	2000		
UF3915	UF-PB-Z-D1.5-L20	3000		
UF3015	UF-FB-A-D1.5-L20	6000		
UF3110	UF-PB-G-D1-L20	150	1.0 / 0.0393	12000
UF3210	UF-PB-P-D1-L20	200		
UF3310	UF-PB-V-D1-L20	400		
UF3410	UF-PB-O-D1-L20	600		
UF3510	UF-PB-B-D1-L20	800		
UF3610	UF-PB-W-D1-L20	1000		
UF3710	UF-PB-R-D1-L20	1200		
UF3810	UF-PB-M-D1-L20	2000		
UF3910	UF-PB-Z-D1-L20	3000		
UF3010	UF-PB-A-D1-L20	6000		

POINT BRUSH CUTTING RECOMMENDATIONS

Description	Ød		Max. Spindle Speed min ⁻¹
	mm	inch	
UF-PB-....-D1-L20	1	0.039	12000
UF-PB-....-D1.5-L20	1.5	0.079	12000
UF-PB-....-D2-L20	2	0.079	12000
UF-PB-....-D2.5-L20	2.5	0.098	12000
UF-FB-....-D3-L20	3	0.118	12000



UFIBER

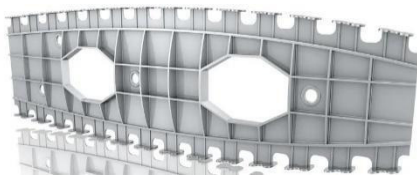
CASE STUDIES

1. Engine Block



- **Material:** ADC12 (A383.0) Aluminum-silicon alloys
- **Cutting Parameters:** S=6000RPM, F=1000mm/min (39.4 inch/min.), DOC=0.5mm (.0196")
- Surface Brush Ø25 Grit#1000 (White)

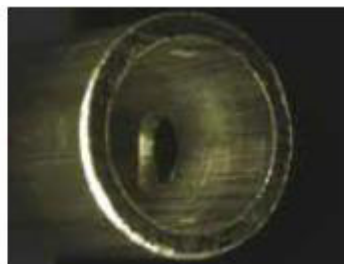
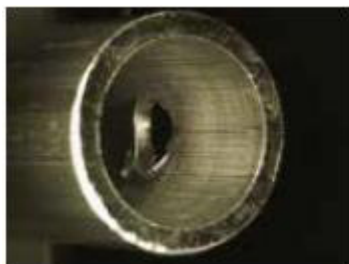
2. Aircraft Rib



- **Material:** ADC12 (A383.0) Aluminum-silicon alloys
- **Cutting Parameters:** S=6000RPM, F=1000mm/min (39.4 inch/min.), DOC=0.5mm (.0196")
- Surface Brush Ø25 Grit#1000 (White)

this page I'll design tomorrow

3. Remove burrs in Aluminum pipe



- **Material:** Aluminum
- **Cutting Parameters:** S=11000RPM, F=1100mm/min (43.3 inch/min.)
- Cross-hole Brush Ø5 Grit#1000 (White)

UFIBER

THE NEW NOGA MT UFIBER BRUSHES

All NOGA products meet the strict requirements of ISO 9001 and ISO 14001.

NOGA reserves the right to make changes in any of its products without prior notice. © Copyright NOGA Engineering & Technology (2008) Ltd. All rights reserved. No part of this publication may be reproduced, transcribed, stored in an electronic retrieval system, translated into any language or computer language, or be transmitted in any form whatsoever without the prior written consent of the publisher.



We invite you to visit our web site: www.nogamt.com
for further information.

NOGA ENGINEERING & TECHNOLOGY (2008) LTD

P.O.B 55 Dora Industrial Park, Shlomi 2283200, Israel

Tel: 972-4-9808080 | Fax: 972-4-9808638 | E-mail: noga@noga.com