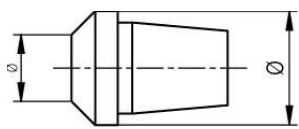


## Accessoires | Zubehör | Accessories

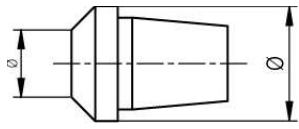
Instruments verticaux  
Height gauges  
Höhenmessgeräte



**TV2S2**  
279 901007 002

Cône Ø0-15 mm  
Konus Ø0-15 mm  
Cone Ø0-15 mm

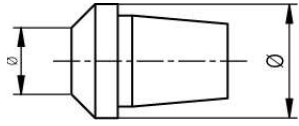
■							
---	--	--	--	--	--	--	--



**TV2S3**  
279 901007 003

Cône Ø13-20.5 mm  
Konus Ø13-20.5 mm  
Cone Ø13-20.5 mm

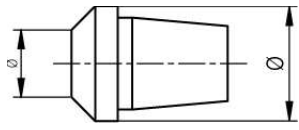
■							
---	--	--	--	--	--	--	--



**TV2S4**  
279 901007 004

Cône Ø17-24.5 mm  
Konus Ø17-24.5 mm  
Cone Ø17-24.5 mm

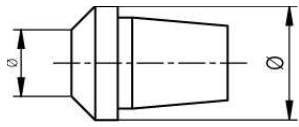
■							
---	--	--	--	--	--	--	--



**TV2S5**  
279 901007 005

Cône Ø23-30.5 mm  
Konus Ø23-30.5 mm  
Cone Ø23-30.5 mm

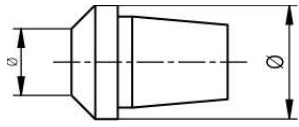
■							
---	--	--	--	--	--	--	--



**TV2S6**  
279 901007 006

Cône Ø26-35.5 mm  
Konus Ø26-35.5 mm  
Cone Ø26-35.5 mm

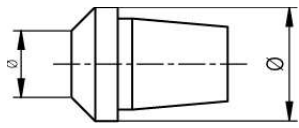
■							
---	--	--	--	--	--	--	--



**TV2S7**  
279 901007 007

Cône Ø32-39 mm  
Konus Ø32-39 mm  
Cone Ø32-39 mm

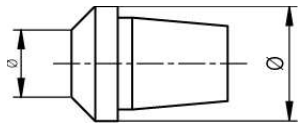
■							
---	--	--	--	--	--	--	--



**TV2S8**  
279 901007 008

Cône Ø36-45 mm  
Konus Ø36-45 mm  
Cone Ø36-45 mm

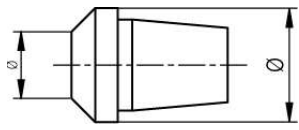
■							
---	--	--	--	--	--	--	--



**TV2S9**  
279 901007 009

Cône Ø41-50 mm  
Konus Ø41-50 mm  
Cone Ø41-50 mm

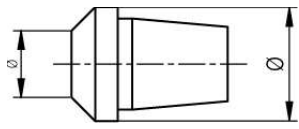
■							
---	--	--	--	--	--	--	--



**TV2S10**  
279 901007 010

Cône Ø46-55 mm  
Konus Ø46-55 mm  
Cone Ø46-55 mm

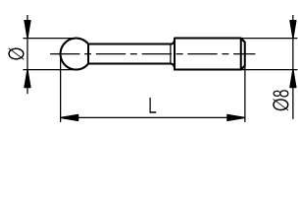
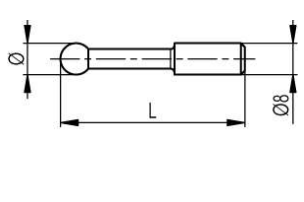
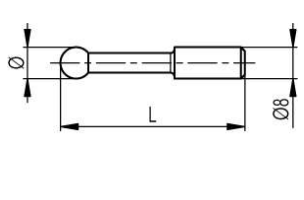
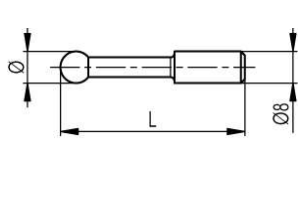
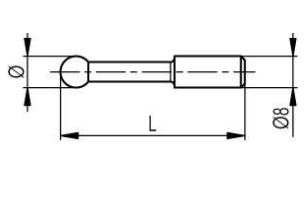
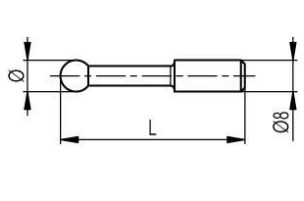
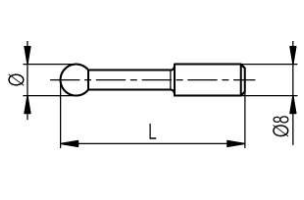
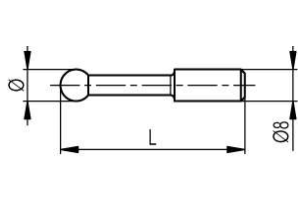
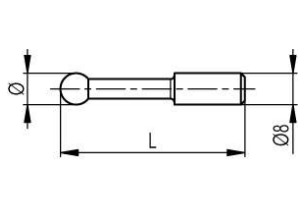
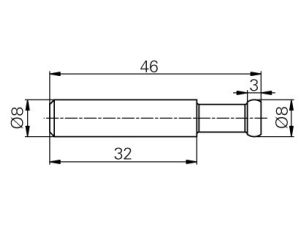
■							
---	--	--	--	--	--	--	--

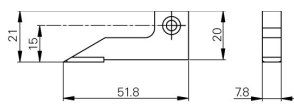


**TV2S11**  
279 901007 011

Cône Ø51-60 mm  
Konus Ø51-60 mm  
Cone Ø51-60 mm

■							
---	--	--	--	--	--	--	--

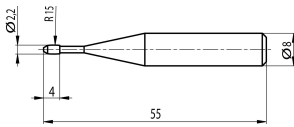
	<p><b>TVM2.9</b> 509 05 20 0001</p>	<p>Touche à bille Ø0.5 mm, L=40.4 mm Kugel-Messeinsatz Ø0.5 mm, L=40.4 mm Ball insert Ø0.5 mm, L=40.4 mm</p>	■							
	<p><b>TVM2.8</b> 509 05 20 0003</p>	<p>Touche à bille Ø1 mm, L=40.8 mm Kugel-Messeinsatz Ø1 mm, L=40.8 mm Ball insert Ø1 mm, L=40.8 mm</p>	■							
	<p><b>TVM2.4</b> 509 05 20 0009</p>	<p>Touche à bille Ø2 mm, L=41.6 mm Kugel-Messeinsatz Ø2 mm, L=41.6 mm Ball insert Ø2 mm, L=41.6 mm</p>	■							
	<p><b>TVM2.3</b> 509 05 20 0014</p>	<p>Touche à bille Ø3 mm, L=42.5 mm Kugel-Messeinsatz Ø3 mm, L=42.5 mm Ball insert Ø3 mm, L=42.5 mm</p>	■							
	<p><b>TVM2.2</b> 509 05 20 0025</p>	<p>Touche à bille Ø4 mm, L=43.5 mm Kugel-Messeinsatz Ø4 mm, L=43.5 mm Ball insert Ø4 mm, L=43.5 mm</p>	■							
	<p><b>TVM2.6</b> 509 05 20 0031</p>	<p>Touche à bille Ø5 mm, L=43.9 mm Kugel-Messeinsatz Ø5 mm, L=43.9 mm Ball insert Ø5 mm, L=43.9 mm</p>	■							
	<p><b>TVM2.1</b> 509 05 20 0037</p>	<p>Touche à bille Ø6 mm, L=45.1 mm Kugel-Messeinsatz Ø6 mm, L=45.1 mm Ball insert Ø6 mm, L=45.1 mm</p>	■							
	<p><b>TVM2.7</b> 509 05 20 0045</p>	<p>Touche à bille Ø7 mm, L=46.1 mm Kugel-Messeinsatz Ø7 mm, L=46.1 mm Ball insert Ø7 mm, L=46.1 mm</p>	■							
	<p><b>TVM2</b> 509 05 20 0051</p>	<p>Touche à bille Ø8 mm, L=47.3 mm Kugel-Messeinsatz Ø8 mm, L=47.3 mm Ball insert Ø8 mm, L=47.3 mm</p>	■							
	<p><b>TVM2.5</b> 509 05 20 0059</p>	<p>Touche à plateau Ø8 mm Zylindrischer Messeinsatz Ø8 mm Disc shaped insert Ø8 mm</p>	■							



**TVM3**  
609 12 003

Pointe à tracer  
Anreissnadel  
Scriber

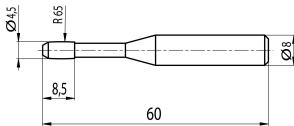
	■								



**TVA9.1**  
509 05 20 0011

Touche en tonneau M3-M16, L=55 mm  
Balliger Messeinsatz M3-M16, L=55 mm  
Barrel-shaped insert M3-M16, L=55 mm

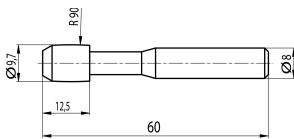
		■	■	■	■	■	■	■	■



**TVA9.2**  
509 05 20 0029

Touche en tonneau M6-M48, L=60 mm  
Balliger Messeinsatz M6-M48, L=60 mm  
Barrel-shaped insert M6-M48, L=60 mm

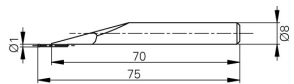
		■	■	■	■	■	■	■	■



**TVA9.3**  
509 05 20 0062

Touche en tonneau M12-M150, L=60 mm  
Balliger Messeinsatz M12-M150, L=60 mm  
Barrel-shaped insert M12-M150, L=60 mm

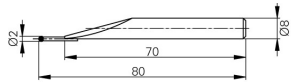
		■	■	■	■	■	■	■	■



**TA-MI-111**  
509 05 20 0078

Touche à bille métal dur Ø1 mm, L=75 mm  
Messeinsatz mit Hartmetall-Kugel Ø1 mm, L=75 mm  
Measuring insert with tungst. carb. ball, Ø1 mm, L=75 mm

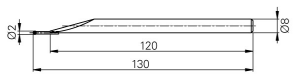
		■	■	■	■	■	■	■	■



**TA-MI-110**  
509 05 20 0077

Touche à bille en métal dur Ø2 mm, L=80 mm  
Messeinsatz mit Hartmetall-Kugel Ø2 mm, L=80 mm  
Measuring insert with tungst. carb. ball Ø2 mm, L=80 mm

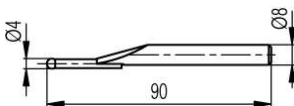
		■	■	■	■	■	■	■	■



**TA-MI-104**  
509 05 20 0080

Touche à bille métal dur Ø2 mm, L=130 mm  
Messeinsatz mit Hartmetall-Kugel Ø2 mm, L=130 mm  
Measuring insert with tungst. carb. ball Ø2mm, L=130 mm

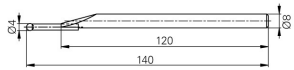
		■	■	■	■	■	■	■	■



**TA-MI-102**  
509 05 20 0075

Touche à bille métal dur Ø4mm, L=90 mm  
Messeinsatz mit Hartmetall-Kugel Ø4 mm, L=90 mm  
Measuring insert with tungst. carb. ball Ø4 mm, L=90 mm

		■	■	■	■	■	■	■	■



**TA-MI-105**  
509 05 20 0079

Touche à bille métal dur, Ø4 mm, L=140 mm  
Messeinsatz mit Hartmetall-Kugel Ø4 mm, L=140 mm  
Measuring insert with tungst. carb. ball Ø4 mm, L=140 mm

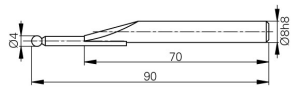
		■	■	■	■	■	■	■	■



**TA-MI-106**  
279 918011 004

Touche à bille rubis Ø5 mm, L=129 mm  
Messeinsatz mit Rubin-Kugel Ø5 mm, L=129 mm  
Measuring insert with ruby ball Ø5 mm, L=129 mm

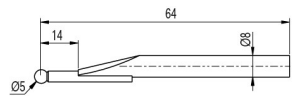
		■	■	■	■	■	■	■	■



**TA-MI-101**  
509 05 20 0074

Touche à bille rubis Ø4 mm, L=90 mm  
Messeinsatz mit Rubin-Kugel Ø4 mm, L=90 mm  
Measuring insert with ruby ball Ø4 mm, L=90 mm

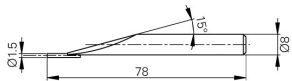
	■	■	■	■	■			



**TA-MI-119**  
SP279 918011 005

Touche à bille rubis Ø5 mm, L=64 mm  
Messeinsatz mit Rubin-Kugel Ø5 mm, L=64 mm  
Measuring insert with ruby ball Ø5 mm, L=64 mm

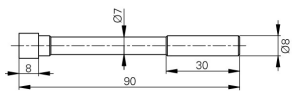
							■	■



**TA-MI-107**  
509 05 20 0081

Touche à goupille métal dur Ø1.5 mm, L=78 mm  
Zylindrischer Messeinsatz Ø1.5 mm, L=78 mm  
Measuring insert with pin Ø1.5 mm, L=78 mm

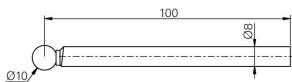
	■	■	■	■	■	■	■	■



**TA-MI-112**  
509 05 20 0082

Touche à surfaces planes, 10 x 10 mm, L=90 mm  
Messeinsatz mit Parallel-Messflächen, 10 x 10 mm, L=90 mm  
Measuring insert with parallel faces, 10 x 10 mm, L=90 mm

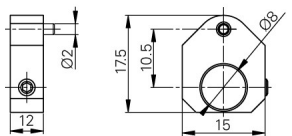
	■	■	■	■	■	■	■	■



**TA-MI-108**  
279 918011 002

Touche à bille rubis Ø10 mm, L=100 mm  
Messeinsatz mit Rubin-Kugel Ø10 mm, L=100 mm  
Measuring insert with ruby ball Ø10 mm, L=100 mm

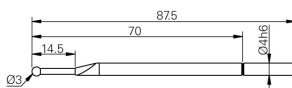
	■	■	■	■	■	■	■	■



**TA-AD-101**  
603 11 001

Bague de positionnement de touche Ø8 mm  
Positionierhalter für Messeinsatz Ø8 mm  
Positioning holder for measuring insert Ø8 mm

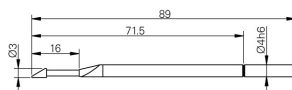
	■	■	■	■	■	■	■	■



**TA-MI-109**  
279 918011 003

Touche à bille rubis Ø3 mm, L=87.5 mm  
Messeinsatz mit Rubin-Kugel Ø3 mm, L=87.5 mm  
Measuring insert with ruby ball Ø3 mm, L=87.5 mm

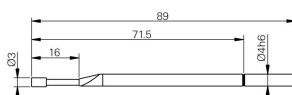
	■	■	■	■	■	■	■	■



**V-50.10**  
279 918007 001

Touche biseautée  
Abgeschrägter Messeinsatz  
Knife-edge insert

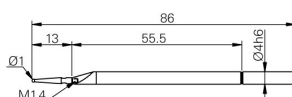
	■	■	■	■	■	■	■	■



**V-50.11**  
279 918013 001

Touche en tonneau Ø3 x 5 mm, L = 89 mm  
Balliger Messeinsatz Ø3 x 5 mm, L = 89 mm  
Barrel-shaped insert Ø3 x 5 mm, L = 89 mm

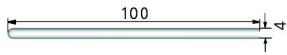
	■	■	■	■	■	■	■	■



**V-50.12**  
279 918012 001

Touche à bille Ø1 mm avec porte-touche, L=86 mm  
Kugel-Messeinsatz Ø1 mm mit Halter, L=86 mm  
Measuring insert Ø1 mm with holder, L=86 mm

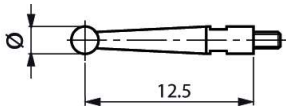
	■	■	■	■	■	■	■	■



**TA-MI-114**  
506 22 20 0063

Goupille, 1 face hémisphérique et 1 face plane, L=100 mm  
Stift, 1 halbkugelförmige und 1 flache Messfläche, L=100 mm  
Pin, 1 hemispheric and 1 plane face, L=100 mm

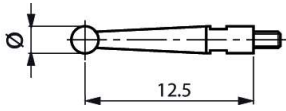
	■	■	■	■	■	■	■



**TA-MI-115**  
279 901001 001

Touche M1.4 avec bille Ø1 mm, L=12.5 mm  
Fühlhebelmesseinsatz M1.4 mit Kugel Ø1 mm, L=12,5 mm  
Measuring insert M1.4 with ball Ø1 mm, L=12.5 mm

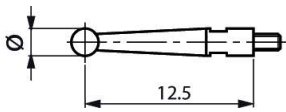
	■	■	■	■	■	■	■



**TA-MI-116**  
279 901001 002

Touche M1.4 avec bille Ø2 mm, L=12.5 mm  
Fühlhebelmesseinsatz M1.4 mit Kugel Ø2 mm, L=12,5 mm  
Measuring insert M1.4 with ball Ø2 mm, L=12.5 mm

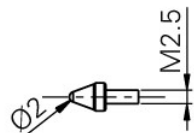
	■	■	■	■	■	■	■



**TA-MI-117**  
279 901001 003

Touche M1.4 avec bille Ø3 mm, L=12.5 mm  
Fühlhebelmesseinsatz M1.4 mit Kugel Ø3 mm, L=12,5 mm  
Measuring insert M1.4 with ball Ø3 mm, L=12.5 mm

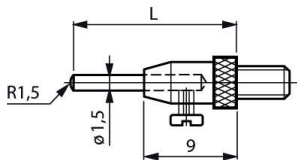
	■	■	■	■	■	■	■



**V-50.4**  
279 918010 001

Touche hémisphérique M2,5  
Messeinsatz M2.5 mit kugelförmiger Messfläche  
Measuring insert M2,5 with ball contact

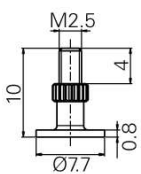
	■	■	■	■	■	■	■



**TA-MI-118**  
279 901003 001

Touche M2.5 à 4 goupilles interchangeable, L=16/26/36/46 mm  
Messeinsatz M2.5 mit 4 wechselbaren Stiften, L=16/26/36/46 mm  
Measuring insert M2.5 with 4 interchangeable pins, L=16/26/36/46 mm

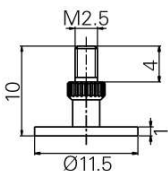
	■	■	■	■	■	■	■



**V-50.2.1**  
279 918005 002

Touche à disque M2.5, Ø7.7 mm  
Diskförmiger Messeinsatz M2.5, Ø7.7 mm  
Disc-shaped inserts M2.5, Ø7.7 mm

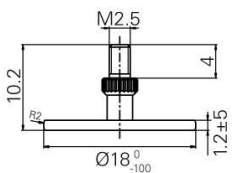
	■	■	■	■	■	■	■



**V-50.2.2**  
279 918005 003

Touche à disque M2.5, Ø11.5 mm  
Diskförmiger Messeinsatz M2.5, Ø11.5 mm  
Disc-shaped insert M2.5, Ø11.5 mm

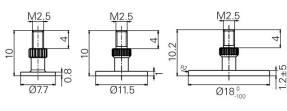
	■	■	■	■	■	■	■



**V-50.2.3**  
279 918005 004

Touche à disque M2.5, Ø18 mm  
Diskförmiger Messeinsatz M2.5, Ø18 mm  
Disc-shaped inserts M2.5, Ø18 mm

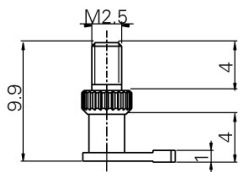
	■	■	■	■	■	■	■



**V-50.2**  
279 918005 001

Jeu de 3 touches à disque M2.5, Ø 7.7 / 11.5 / 18 mm  
Satz mit 3 Diskförmigen Messeinsätzen M2.5, Ø 7.7 / 11.5 / 18 mm  
Set of 3 disc-shaped inserts M2.5, Ø 7.7 / 11.5 / 18 mm

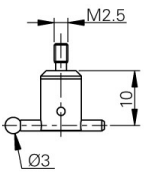
	■	■	■	■	■	■	■



**V-50.3**  
279 918008 001

Touche à pied M2.5  
L-förmiger Messeinsatz M2.5  
Corner insert M2.5

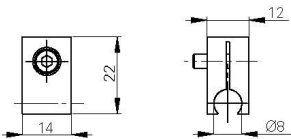
			■	■	■	■	■	■	■



**V-50.1**  
279 918009 001

Touche M2.5 à bille rubis orientable Ø3 mm  
Messeinsatz M2.5 mit Rubin-Kugel Ø3 mm  
Measuring insert M2.5 with ruby ball Ø3 mm

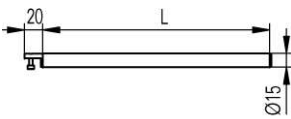
			■	■	■	■	■	■	■



**TVM1.1**  
502 02 10 0015

Bride pour touche Ø 8 mm  
Aufnahme-Bride Ø 8 mm  
Clamping device Ø 8 mm

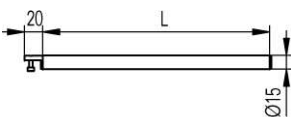
			■						



**TVM1**  
612 11 007

Porte-touche standard TVM, L=154 mm  
Standard Messeinsatz-Halter für TVM, L=154 mm  
Standard insert holder for TVM, L=154 mm

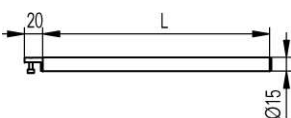
			■						



**TVM1/L250**  
612 11 061

Porte-touche, L=250 mm  
Messeinsatz-Halter, L=250 mm  
Insert holder, L=250 mm

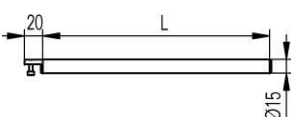
			■						



**TVM1/L300**  
612 11 062

Porte-touche, L=300 mm  
Messeinsatz-Halter, L=300 mm  
Insert holder, L=300 mm

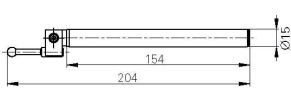
			■						



**TVM1/L350**  
612 11 063

Porte-touche, L=350 mm  
Messeinsatz-Halter, L=350 mm  
Insert holder, L=350 mm

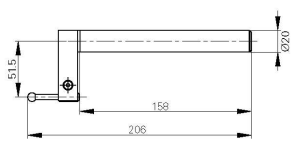
			■						



**TVM1/1.1/2**  
609 05 061

Touche + porte-touche (TVM1 + 1.1 + 2), (Jeu complet)  
Messeinsatz mit Halter (TVM1 + 1.1 + 2), (Kompletter Satz)  
Measuring insert + holder (TVM1 + 1.1 + 2), (Complete Set)

			■						



**TVA1**  
612 11 028

Touche + porte-touche pour TVM1000  
Messeinsatz mit Halter für TVM1000  
Measuring insert + holder for TVM1000

			■						



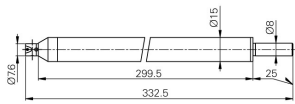
**TVM4**  
609 05 074

Touche bidirectionnelle Ø4 mm  
Umkehrtaster Ø4 mm  
Bi-directional probe Ø4 mm

			■						

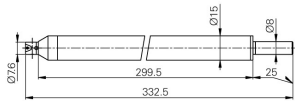






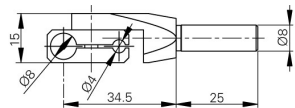
**TA-IH-102**  
612 11 046

Porte-touche M2.5, L=300 mm  
Messeinsatz-Halter M2.5, L=300 mm  
Measuring insert holder M2.5, L=300 mm



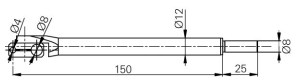
**TA-IH-119**  
612 11 048

Porte-touche (")4-48, L=300mm  
Messeinsatz-Halter (")4-48, L=300mm  
Measuring insert holder (")4-48, L=300mm



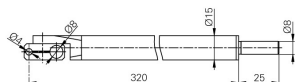
**TA-IH-104**  
612 11 053

Porte-touche orientable Ø4 et Ø8 mm  
Orientabler Messeinsatz-Halter Ø4 und Ø8 mm  
Swivel holder Ø4 and Ø8 mm



**TA-IH-105**  
612 11 051

Porte-touche orientable Ø4 et Ø8 mm, L=150 mm  
Orientabler Messeinsatz-Halter Ø4 und Ø8 mm, L=150 mm  
Swivel holder Ø4 and Ø8 mm, L=150 mm



**V-2E/D1/4/L15**  
612 11 013

Porte-touche orientable Ø1/4 ", L=150 mm  
Orientabler Messeinsatz-Halter Ø1/4 ", L=150 mm  
Swivel holder Ø1/4 ", L=150 mm



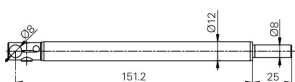
**TA-IH-106**  
612 11 039

Porte-touche orientable Ø4 et Ø8 mm, L=300 mm  
Orientabler Messeinsatz-Halter Ø4 und Ø8 mm, L=300 mm  
Swivel holder Ø4 and Ø8 mm, L=300 mm



**TA-IH-107**  
612 11 055

Porte-touche à 90°, Ø8 mm  
Messeinsatz-Halter 90°, Ø8 mm  
Insert holder 90°, Ø8 mm



**TA-IH-108**  
612 11 052

Porte-touche à 90°, Ø8 mm, L=150 mm  
Messeinsatz-Halter 90°, Ø8 mm, L=150 mm  
Insert holder 90°, Ø8 mm, L=150 mm



**TA-IH-129**  
612 11 040

Porte-touche orienté à 90°, Ø 8mm, L=300mm  
Messeinsatz-Halter, 90° geschwenkt, Ø 8mm, L=300mm  
Holder at 90°, Ø 8mm, L=300mm

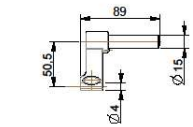


**TA-IH-109**  
612 11 054

Porte-touche à 90°, Ø4 mm  
Messeinsatz-Halter 90°, Ø4 mm  
Insert holder 90°, Ø4 mm

TVM	V3	V4	V5	V6	V7	V8	V9
TA-IH-102							
TA-IH-119						■	■
TA-IH-104						■	■
TA-IH-105						■	■
V-2E/D1/4/L15						■	■
TA-IH-106						■	■
TA-IH-107	■	■	■	■	■	■	■
TA-IH-108	■	■	■	■	■	■	■
TA-IH-129						■	■
TA-IH-109	■	■	■	■	■	■	■

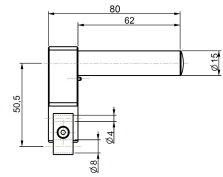




**TA-IH-137**  
SP612 11 065 01

Porte-touche Ø6 mm  
Messeinsatz-Halter Ø6 mm  
Measuring insert holder Ø6 mm

	■	■	■	■	■			



**TA-IH-130**  
612 11 072

Porte-touche orientable Ø4 et Ø8 mm  
Orientabler Messeinsatz-Halter Ø4 und Ø8 mm  
Swivel holder Ø4 and Ø8 mm

	■	■	■	■	■			



**TA-IH-127**  
612 11 066

Porte-touche Ø8 mm, L=400 mm  
Messeinsatz-Halter Ø8 mm, L=400 mm  
Insert holder Ø8 mm, L=400 mm

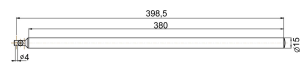
	■	■	■	■	■			



**TA-IH-131**  
612 11 068

Porte-touche orientable Ø4 et Ø8 mm, L=400 mm  
Orientabler Messeinsatz-Halter Ø4 und Ø8 mm, L=400 mm  
Swivel holder Ø4 and Ø8 mm, L=400 mm

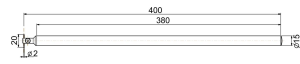
	■	■	■	■	■			



**TA-IH-132**  
612 11 069

Porte-touche 90°, Ø4 mm, L=400 mm  
Messeinsatz-Halter 90°, Ø4 mm, L=400 mm  
Insert holder 90°, Ø4 mm, L=400 mm

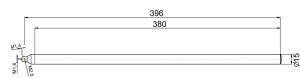
	■	■	■	■	■			



**TA-IH-133**  
612 11 070

Porte-touche à tige Ø2 x 20 mm, L=400 mm  
Messeinsatz-Halter mit Stift Ø 2 x 20 mm, L=400 mm  
Insert holder with pin Ø2 x 20 mm, L=400 mm

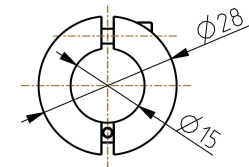
	■	■	■	■	■			



**TA-IH-134**  
612 11 071

Porte-touche M2.5, L=400 mm  
Messeinsatz-Halter M2.5, L=400 mm  
Measuring insert holder M2.5, L=400 mm

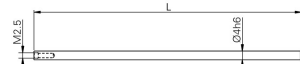
	■	■	■	■	■			



**TA-AD-105**  
603 11 003

Bague de positionnement de touche Ø15 mm  
Positionierhalter für Messeinsatz Ø15 mm  
Positioning holder for measuring insert Ø15 mm

	■	■	■	■	■			



**V-50.6**  
279 918002 002

Porte-touche M2.5, L=80 mm  
Messeinsatz-Halter M2.5, L=80 mm  
Measuring insert holder M2.5, L=80 mm

	■	■	■	■	■	■	■	■



**V-50.5**  
279 918002 001

Porte-touche M2.5, L=124 mm  
Messeinsatz-Halter M2.5, L=124 mm  
Measuring insert holder M2.5, L=124 mm

	■	■	■	■	■	■	■	■



	<p><b>TA-MS-104</b> 609 02 021</p>	<p>Palpeur de perpendicularité pour V7-1800, (sans support TA-IH-136) Rechtwinkligkeitstaster für V7-1800, (ohne Halter TA-IH-136) Perpendicularity probe for V7-1800, (without support TA-IH-136)</p>						■		
	<p><b>TA-SU-101</b> 740 02 001</p>	<p>Paire de vis d'appui pour base V4 ÷ V9 Paar Stützschrauben für Gerätebasis V4 ÷ V9 Pair of abutment screw for instrument base V4 ÷ V9</p>			■	■	■	■	■	■
	<p><b>TA-SE-106</b> 605 01 022</p>	<p>Jeux d'accessoires "Macro" (16 pcs) Zubehörsatz "Macro" (16 Stk.) Set of accessories "Macro" (16 pcs)</p>	■	■	■	■	■	■	■	■
	<p><b>TA-SE-102</b> 605 01 008</p>	<p>Jeux d'accessoires "Micro" (20 pcs) Zubehörsatz "Micro" (20 Stk.) Set of accessories "Micro" (20 pcs)</p>						■	■	
	<p><b>TA-SE-105</b> 605 01 023</p>	<p>Jeux d'accessoires "Micro" (20 pcs) Zubehörsatz "Micro" (20 Stk.) Set of accessories "Micro" (20 pcs)</p>	■	■	■	■	■			
	<p><b>TA-SE-107</b> 605 01 024</p>	<p>Jeux d'accessoires "Eco" (7 pcs) Zubehörsatz "Eco" (7 Stk.) Set of accessories "Eco" (7 pcs)</p>	■	■	■	■	■	■	■	■
	<p><b>TA-MG-104</b> 609 01 032</p>	<p>Jauge d'étalonnage 25 mm Einstellehre 25 mm Setting gauge 25 mm</p>	■	■	■	■	■	■	■	■
	<p><b>TA-MG-105</b> SP609 01 032 02</p>	<p>Bloc d'étalonnage avec hauteur et diamètre, H=100 mm Einstell-Lehre mit Höhe und Durchmesser, H=100 mm Setting gauge with height and diameter, H=100 mm</p>	■	■	■	■	■	■	■	■
	<p><b>TA-MG-001</b> 503 11 20 0078</p>	<p>Bague de référence standard Ø 40 mm, avec certificat SCS, U= (2s= 0,6 + 1.7 x L) [µm] Standard Referenzring Ø 40 mm, mit SCS-Zertifikat, U= (2s= 0,6 + 1.7 x L) [µm] Standard reference ring Ø40 mm, With SCS certificate, U= (2s= 0,6 + 1.7 x L) [µm]</p>	■	■	■	■	■	■	■	■
	<p><b>TA-SU-102</b> SP609 40 040 03</p>	<p>Support pour mesure de bague-étalon TA-MG-001, (sans bague) Messsänder für Einstellring TA-MG-001, (ohne Ring) Measuring stand for master ring gauge TA-MG-001, (without ring)</p>	■	■	■	■	■	■	■	■



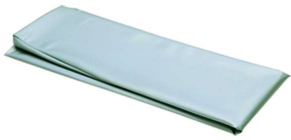
<p><b>TA-TO-102</b> 614 00 007</p>	Pièce de démonstration							
	Vorführungsteil	■	■	■	■	■	■	■
	Demonstration piece							



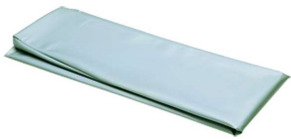
<p><b>V-60</b> 612 12 045</p>	Support de rangement pour accessoires							
	Zubehör-Ablagefach	■	■	■	■	■	■	■
	Wooden accessories support							



<p><b>V-50.13</b> 290 918001 001</p>	Clé pour touche comparateur à levier							
	Schlüssel für Fühlhebelmesseinsatz		■	■	■	■	■	■
	Wrench for measuring inserts							



<p><b>TVM.HO300</b> 505 05 10 0009</p>	Housse de protection pour TVM301							
	Schutzhaube für TVM301	■						
	Protection cover for TVM301							



<p><b>TVM.HO600</b> 505 05 10 0011</p>	Housse de protection pour TVM601							
	Schutzhaube für TVM601	■						
	Protection cover for TVM601							



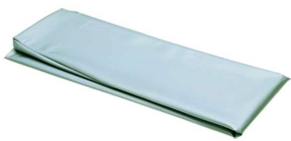
<p><b>TA-TO-114</b> 505 05 10 0041</p>	Housse de protection pour V3 ÷ V9 - 400							
	Schutzhaube für V3 ÷ V9 - 400		■	■	■	■	■	■
	Protection cover for V3 ÷ V9 - 400							



<p><b>TA-TO-115</b> 505 05 10 0042</p>	Housse de protection pour V3 ÷ V9 - 700							
	Schutzhaube für V3 ÷ V9 - 700		■	■	■	■	■	■
	Protection cover for V3 ÷ V9 - 700							



<p><b>TA-TO-116</b> 505 05 10 0043</p>	Housse de protection pour V5 ÷ V9 - 1100							
	Schutzhaube für V5 ÷ V9 - 1100			■	■	■	■	■
	Protection cover for V5 ÷ V9 - 1100							



<p><b>TA-TO-117</b> 505 05 10 0044</p>	Housse de protection pour V7 - 1800							
	Schutzhaube für V7 - 1800						■	
	Protection cover for V7 - 1800							



<p><b>TVM.O-PC/AT</b> 333 9 0003</p>	Câble Opto-PC / AT 9 P/F 2 m							
	Kabel Opto-PC / AT 9 P/W 2 m	■						
	Cable Opto-PC / AT 9 P/F 2 m							



**TA-EL-112**  
333 0 0104

Câble pour connexion RS232-PC  
Kabel für RS232-PC-Verbindung  
Cable for RS232-PC connection

	■	■	■	■	■	■	■



**TA-EL-013**  
332 02 0001

Câble de liaison USB A-B, L=1.8 m  
Verbindungskabel, USB A-B, L=1.8 m  
USB A-B connection cable, L=1.8 m

					■		■



**TA-EL-014**  
332 02 0002

Câble de liaison USB A-Mini B, L=1.8m  
Verbindungskabel, USB A-Mini B, L=1.8m  
USB A-Mini B connection cable, L=1.8m

	■	■	■	■		■	



**TA-EL-022**  
716 35 008

Système de transmission de données sans fil, 1 x dongle pour l'Instrument & 1 x dongle USB pour PC  
Drahtloses Datenübertragungssystem, 1 x Dongle für das Instrument & 1 x USB-Dongle für PC  
Wireless data transmission system, 1 x dongle for the instrument & 1 x USB dongle for PC

		■	■	■	■	■	■



**TA-EL-032**  
756 0018

Imprimante thermique avec support, chargeur et câble RS232, (Pour V3 ÷ V6)  
Thermodrucker mit Halter, Ladegerät und RS232-Kabel, (für V3 ÷ V6)  
Thermal printer with holder, AC adapter and RS232 cable, (for V3 ÷ V6)

	■	■	■	■		■	



**TA-EL-033**  
756 0020

Imprimante thermique avec support, chargeur et câble RS232, (Pour V7 & V9)  
Thermodrucker mit Halter, Ladegerät und RS232-Kabel, (für V7 & V9)  
Thermal printer with holder, AC adapter and RS232 cable, (for V7 & V9)

					■		■



**V-30.7**  
788 000001 001

Rouleaux de papier (5 pces) pour imprimante thermique  
Papierrollen (5 Stk.) für Thermodrucker  
Paper rolls (5 pces) for thermal printer

	■	■	■	■	■	■	■



**TA-EL-063**  
3704 0024

Batterie pour imprimante TA-EL-032 & TA-EL-033  
Batteriesatz für Drucker TA-EL-032 & TA-EL-033  
Battery pack for printer TA-EL-032 & TA-EL-033

	■	■	■	■	■	■	■



**TA-EL-132**  
357 0112

Convertisseur AC/DC 100-240V/12V - 3A (avec adaptateur)  
Netzgerät AC/DC 100-240V/12V - 3A (mit Adapter)  
Adapter AC/DC 100-240V/12V - 3A (with adapter)

	■	■	■	■		■	



**TA-EL-133**  
357 0113

Convertisseur AC/DC 100-240V/12V - 2.5A (avec adaptateur)  
Netzgerät AC/DC 100-240V/12V - 2.5A (mit adapter)  
Adapter AC/DC 100-240V/12V - 2.5A (with adapter)

					■		■



**TA-EL-060**  
3704 0021  
Accumulateur pour V3, V4, V5, V6 & V8, (Li-ion 7,2V - 2600mA/h)  
Batteriesatz für V3, V4, V5, V6 & V8, (Li-ion 7,2V - 2600mA/h)  
Battery pack for V3, V4, V5, V6 & V8, (Li-ion 7,2V - 2600mA/h)

	■	■	■	■		■	



**TA-EL-061**  
3704 0022  
Accumulateur pour V7 & V9, (Li-ion 7,2V - 10,4A/h)  
Batteriesatz für V7 & V9, (Li-ion 7,2V - 10,4A/h)  
Battery pack for V7 & V9, (Li-ion 7,2V - 10,4A/h)

					■		■



**TA-EL-062**  
3705 0005  
Pile-bouton pour l'horloge interne  
Batterie für den Uhrzeitspeicher  
Back-up battery

					■		■



**BAT-TVM.OPT**  
3705 0002  
Pile  
Batterie  
Lithium Cell

■							



**TA-SW-002**  
394 1 0051  
Logiciel de communication (TrimosDataTransfer)  
Software für Datenübertragung (TrimosDataTransfer)  
Software for data transfer (TrimosDataTransfer)

	■	■	■	■	■	■	■



**TA-SW-003**  
394 1 0052  
Logiciel de communication (TrimosDataTransfer Advanced), avec création de port COM virtuel  
Software für Datenübertragung (TrimosDataTransfer Advanced), mit virtueller COM-Port Erstellung  
Software for data transfer (TrimosDataTransfer Advanced), with virtual COM-port creation

		■	■	■	■	■	■



**TRIMOS SA**

Av. de Longemalle 5  
CH-1020 Renens  
T. +41 21 633 01 01  
[www.trimos.com](http://www.trimos.com)